

7.2 CIM Measurement associations

7.2.1 General

A IEC 61850 IED is a type of a CIM RemoteUnit. RemoteUnits are associated with Communication Links. This association corresponds to IEC 61850 Communication Access Points as described in Section 12 Communication model.

The current CIM SCADA package differentiates between {RemotePoints, RemoteSource} versus {MeasurementValues, MeasurementValueSource}. It is proposed that the current SCADA package be changed (see Figure 12) in order to more closely align with IEC 61850.

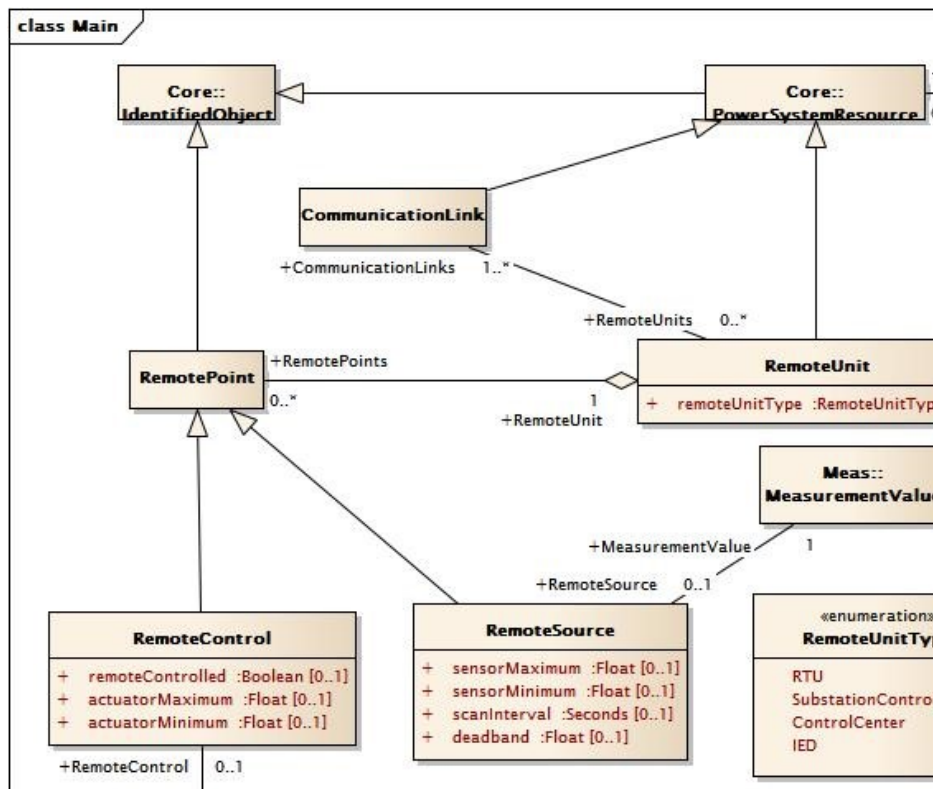


Figure 12 – Current CIM SCADA package

7.2.2 Recommendation for harmonisation: CIM SCADA package

Recommendation R12: Revise the IEC 61970 SCADA package as proposed in Figure 13. The major change is to make a RemoteUnit a specialization of MeasurementValueSource and to separate the semantics of scan/update interval versus SCADA limit information. This change allows the merging of the Measurement and SCADA models and allows RemoteUnits and IEDs to be directly associated with the MeasurementValues that are being sourced.

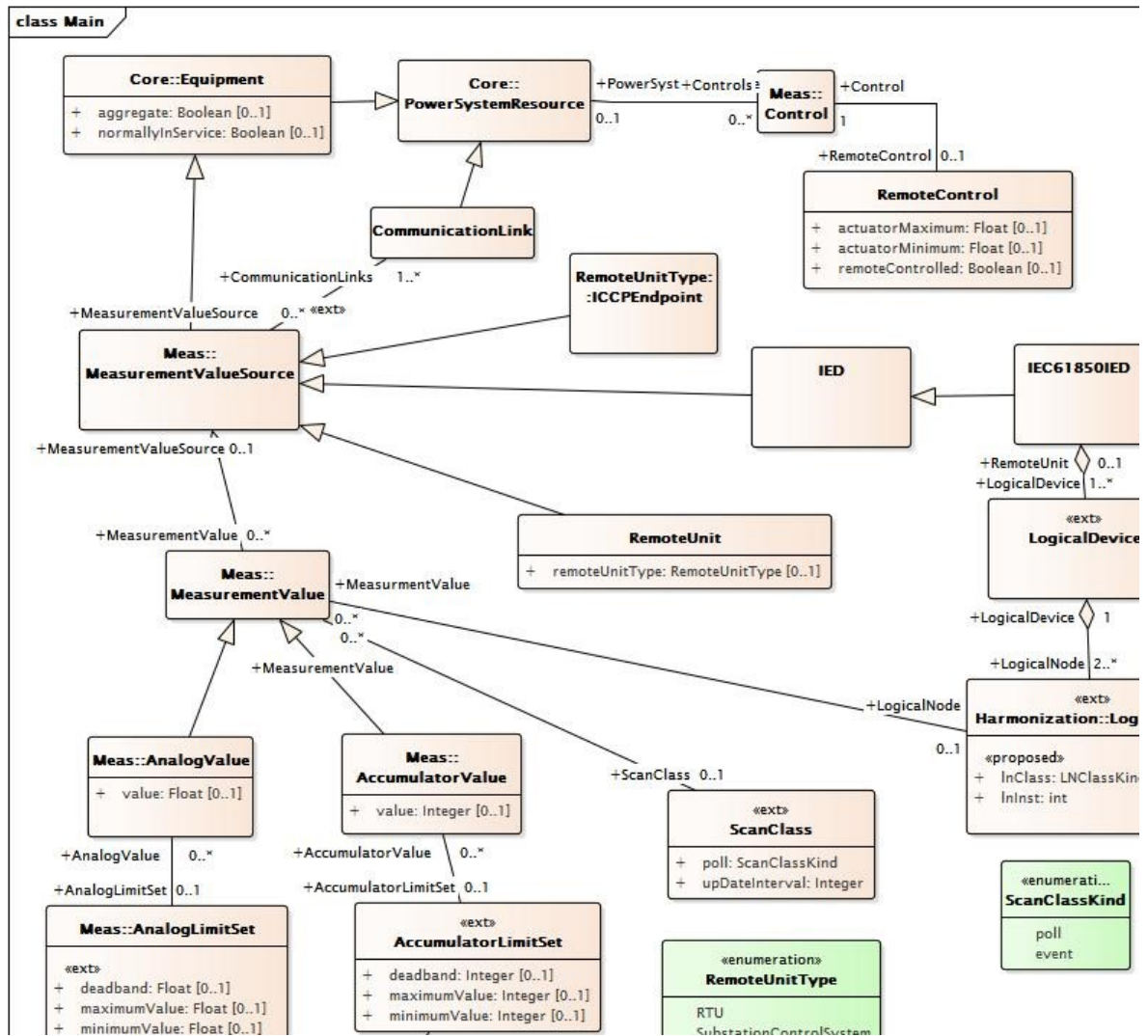


Figure 13 – Revised SCADA package