
IEC TC57 WG16

MAINTENANCE REQUEST

Maintenance notice:

This template needs to be completed and sent to: WG16Part301@iectc57.org

Rules:

All participants in the IEC TC 57 WG16 may issue a Maintenance Request concerning IEC TC 57 WG16 documents, UML models or code components. This document defines the form that is to be used to submit such a request.

General guidelines for the Maintenance Request submission:

- The form is to be completed with all the necessary information.
- All associated documents required for the understanding of the Maintenance Request are to be provided.
- It is highly recommended to provide a presentation describing the use cases and why a change to an existing standard is necessary. Each use case must relate to an ongoing or upcoming project (American, European or National project). Valuable contextual information must be provided such as European regulations or directives, project specifications, and so on.
- If needed the requester can be invited to present their Maintenance Request to IEC TC57 WG16. Failing that an IEC TC57 WG16 member should champion the Maintenance Request so that any questions raised may be immediately resolved.

The IEC TC57 WG16 Convener will inform the submitter when the Maintenance Request is to be reviewed by the WG 16.

The Maintenance Request shall be provided to IEC TC57 WG16 Members and Corresponding Members at least one week prior to its presentation for approval.

The Maintenance Request will be debated within IEC TC57 WG 16 and its Members shall state:

- If the Maintenance Request is to be rejected and the reason of rejection.
- If the Maintenance Request is accepted.
- If the Maintenance Request is accepted with changes.

All decisions shall be obtained through consensus¹.

In all cases, the requester shall be informed of the IEC TC57 WG 16 decision.

Accepted Maintenance Requests, before being implemented in the existing standards, shall be updated in a common excel sheet.

¹ ISO definition of Consensus: “general agreement, characterized by the absence of sustained opposition to substantial issues by any important part of the concerned interests and by a process that involves seeking to take into account the views of all parties concerned and to reconcile any conflicting arguments”.

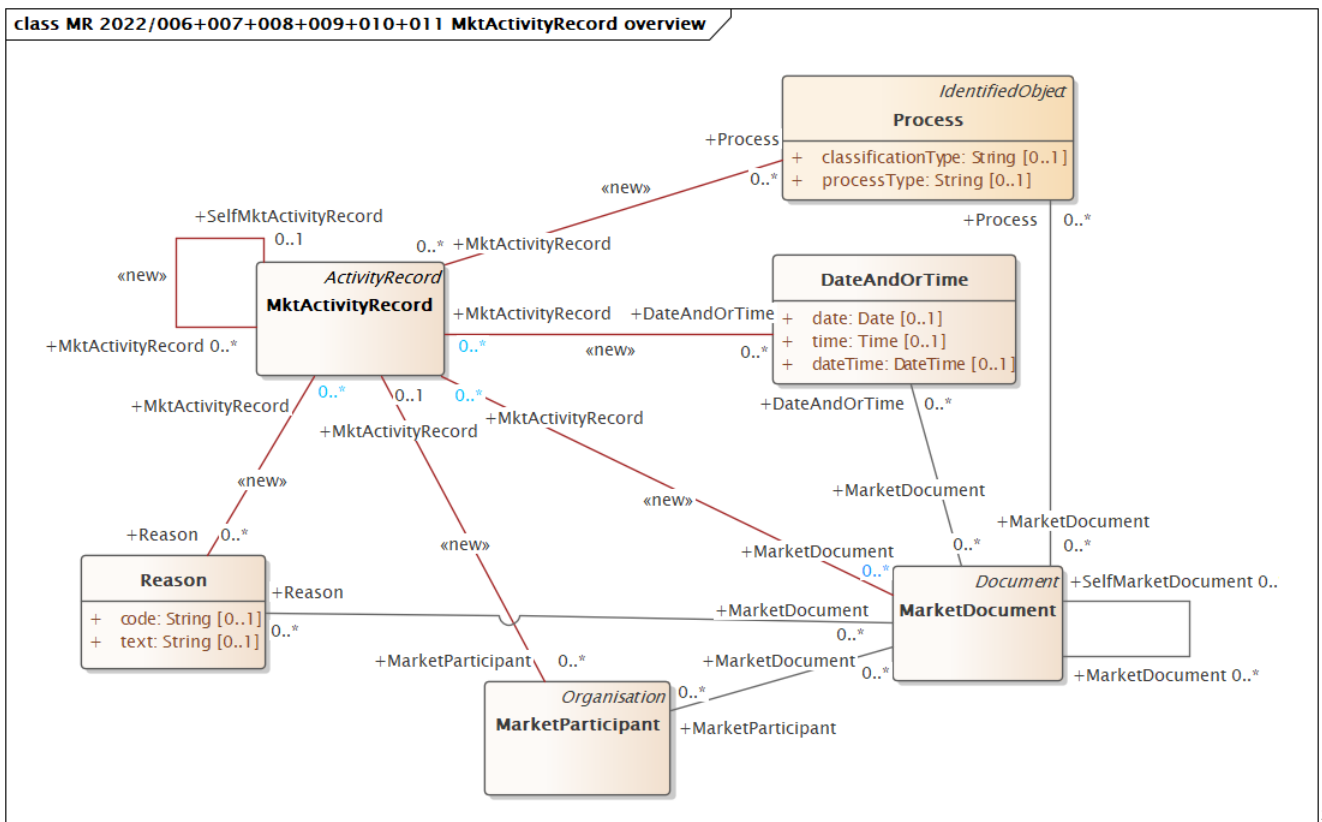
1 General Information

Date of submission:	30/05/2022
Submitter Name:	Jan Owe
Organisation:	Svenska kraftnät
E-mail:	jan.owe@svk.se
Maintenance Request ID	ebIX® 2022/008
Maintenance Request Version	4
Maintenance Request title	New association between MktActivityRecord and MarketDocument

2 Description of the issue (Business requirements, use cases...)

2.1 Background and UseCases

The background for this maintenance request is the IEC TR 62325-103 (TR), describing use cases with mapping to CIM and what was seen as missing in CIM. The following figure shows the new associations proposed in the TR (see figure “Figure 122 – MktActivityRecord, suggested extensions in CIM” from the TR). In addition, ebIX® has found the need for a many-to-many association between MktActivityRecord and MarketDocument:



² Cardinalities shown in blue colours are changed from [0..1] to [0..*] or opposite (from [0..*] to [0..1]) in version 2 and later of this MR.

Hence, this MR is one out of a set of MRs requesting the associations from the MktActivityRecord to other CIM classes.

The association from MarketDocument to MktActivityRecord is typically used for:

- Linking a MarketDocument header to one or more payload(s).
- Sending a payload to more than one actor, such as when a datahub wants to keep track of these messages, i.e. linking a payload to one or more MarketDocument(s).

3 Possible impacts on profiles (ESMP or profiles based on ESMP)

The same kind of update is suggested also in ESMP.

4 Description of the update

4.1 This request applies an update of IEC 62325-301 (If yes, please fill the points below)

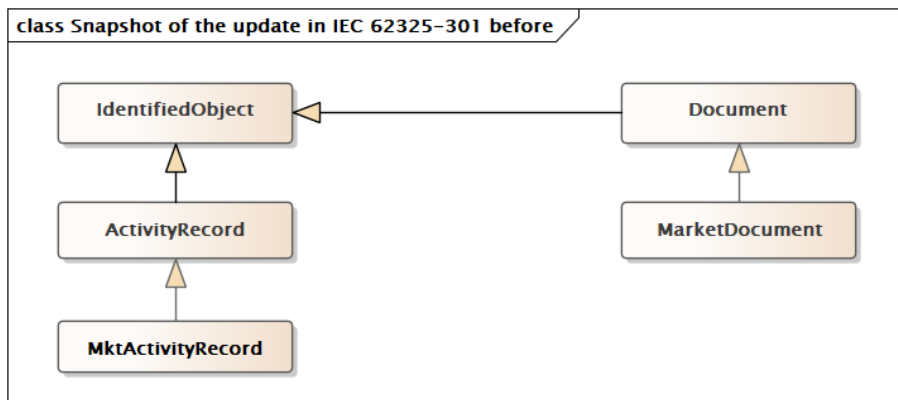
4.1.1 Description of the change/update

Add a many-to-many association between MarketDocument and MktActivityRecord. I.e. a MarketDocument class can be associated with zero or more MktActivityRecord classes [0..*] and a MktActivityRecord class can be associated with zero or more MarketDocument classes [0..*].

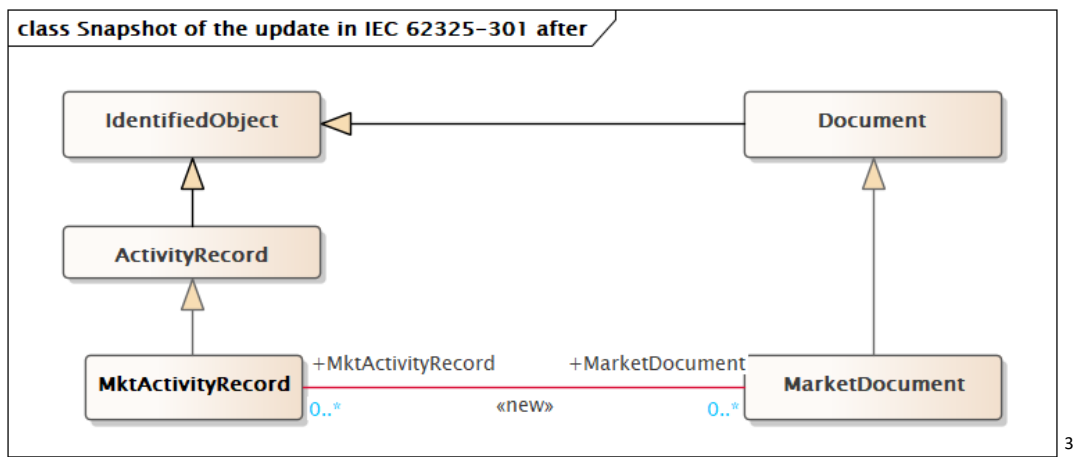
4.1.2 Reference to XMI (Optional)

None.

4.1.3 Snapshot of the update in IEC 62325-301 before



4.1.4 Snapshot of the update in IEC 62325-301 after



See the additions with stereotype <<new>> in the figure above.

4.1.5 Class and attributes descriptions

This MR concerns only addition of an association.

4.2 Description of update of IEC 62325-351 (If yes, please fill the points below)

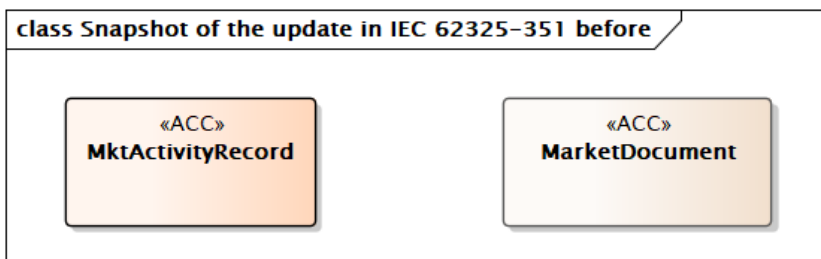
4.2.1 Description of the change/update

Add an aggregation to part from MarketDocument to MktActivityRecord. I.e. a MarketDocument [0..1] can have zero or more associations to MktActivityRecord [0..*]

4.2.2 Reference to XMI (Optional)

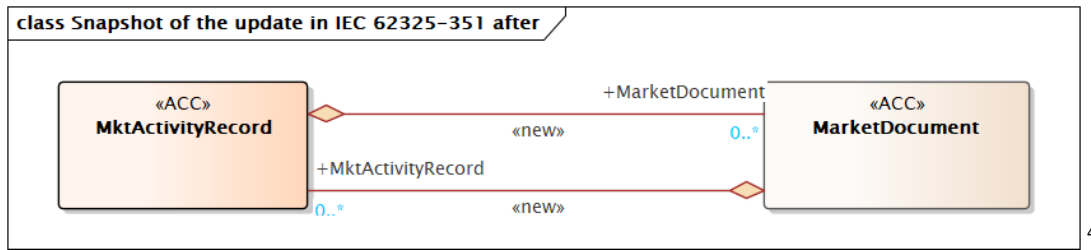
None.

4.2.3 Snapshot of the update in IEC 62325-351 before



³ The cardinality shown in blue colour is changed from [0..*] to [0..1] in version 2 and later of this MR.

4.2.4 Snapshot of the update in IEC 62325-351 after



4.2.4.1 Class and attributes descriptions

This MR concerns only addition of an aggregation.

5 Final agreement

Agreed May 2022.

⁴ The cardinality shown in blue colour is changed from [0..*] to [0..1] in version 2 and later of this MR.